

ANTEO

A brand of **PROMETEON**



ANTEO™

NO AIR BRIDGES
Consult your driver for details for additional information

DOT 79M 3T79R

11 R 22.5 165/163 L
(15 PR)

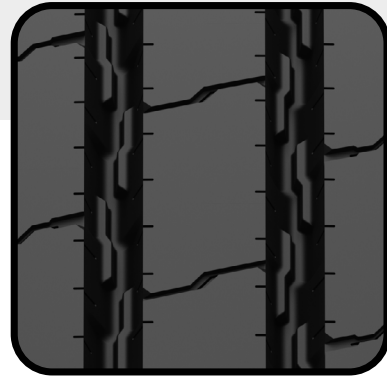
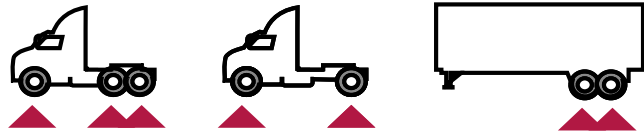
LOAD RANGE K
MAX LOAD 3000 LB (1360 KG)
PLAC DEL
TREAD STEEL
SIDEWALL STEEL

**TRUCK &
BUS TIRES**

Pro

ANTEO PRO - M

REGIONAL
STEER / ALL-POSITION



M+S



ANTEO

SIZE	PRODUCT NUMBER	LOAD RANGE PLY RATING	LOADED RADIUS in (mm)	OVERALL DIAMETER in (mm)	OVERALL WIDTH in (mm)	APPROVED RIMS in.	MINIMUM DUAL SPACING in. (mm)	REVS PER MILE rpm (rpk)	TREAD DEPTH 32nds (mm)	MAX SPEED mph (kph)	SINGLE lbs Psi (kg kPa)	DUAL lbs Psi (kg kPa)
295/75R22.5	6079707	H/16	18.7	40.1	11.4	9.00 8.25	13.2	518	19/32	75	7160/123	6610/123
			(476)	(1018)	(290)							
11R22.5	6079907	H/16	19.2	41.5	11.0	8.25 7.50	12.5	503	19/32	75	6610/120	6005/120
			(489)	(1055)	(280)							
11R24.5	6080107	H/16	20.2	43.5	11.2	8.25 7.50	12.5	481	19/32	75	7160/120	6610/120
			(514)	(1105)	(284)							

Note: Rim underlined is measuring rim / Exceeding the lawful speed limit is neither recommended nor endorsed.

- Tread pattern design promotes safety through wet and snow grip performance
- The groove geometry design prevents stone trapping for maximum tearing resistance.
- The optimized tread footprint enhances steering precision.
- Groove sipes designed for optimized tread wear

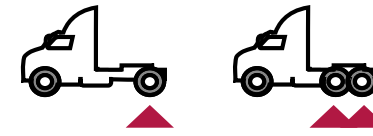
TRUCK TIRE COMPARISON CHART

APPLICATION	WHEEL POSITION	DOUBLE COIN	SAILUN	ROADMASTER TIRES
REGIONAL	Steer - All Position	RR680	S665 EFT	RM234

ANTEO

ANTEO PRO - D

REGIONAL
CLOSED-SHOULDER DRIVE



M+S



ANTEO

SIZE	PRODUCT NUMBER	LOAD RANGE PLY RATING	LOADED RADIUS in (mm)	OVERALL DIAMETER in (mm)	OVERALL WIDTH in (mm)	APPROVED RIMS in.	MINIMUM DUAL SPACING in. (mm)	REVS PER MILE rpm (rpk)	TREAD DEPTH 32nds (mm)	MAX SPEED mph (kph)	SINGLE lbs Psi (kg kPa)	DUAL lbs Psi (kg kPa)
295/75R22.5	6079800	H/16	19.0	40.6	11.3	9.00 8.25	13.2	511	29/32	75	7160/123	6610/123
			(481)	(1032)	(287)							
11R22.5	6080000	H/16	19.5	42.1	11.0	8.25 7.50	12.5	497	29/32	75	6610/120	6005/120
			(495)	(1069)	(280)							
11R24.5	6080200	H/16	20.5	44.1	11.2	8.25 7.50	12.5	475	29/32	75	7160/120	6610/120
			(520)	(1119)	(284)							

Note: Rim underlined is measuring rim / Exceeding the lawful speed limit is neither recommended nor endorsed.

- Waved grooves, bumpers in the transversal grooves and tie-bar on the shoulders enhance traction and even wear.
- Functional sipes enhance wet and snow grip performance.
- Optimized tread block design promotes regular wear and tear resistance.
- Closed Shoulders promote optimized tread wear

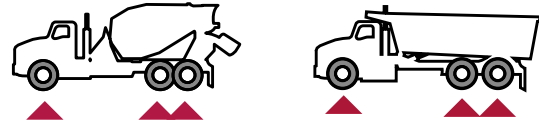
TRUCK TIRE COMPARISON CHART

APPLICATION	WHEEL POSITION	DOUBLE COIN	SAILUN	ROADMASTER TIRES
REGIONAL	Drive	RLB400	SDL70 EFT	RM254

ANTEO

ANTEO MOVER - M

ON-OFF ROAD
STEER / ALL-POSITION



M+S



ANTEO

SIZE	PRODUCT NUMBER	LOAD RANGE PLY RATING	LOADED RADIUS in (mm)	OVERALL DIAMETER in (mm)	OVERALL WIDTH in (mm)	APPROVED RIMS in.	MINIMUM DUAL SPACING in. (mm)	REVS PER MILE rpm (rpk)	TREAD DEPTH 32nds (mm)	MAX SPEED mph (kph)	SINGLE lbs Psi (kg kPa)	DUAL lbs Psi (kg kPa)
11R22.5	6080307	H/16	19.3	41.6	11.0	8.25 7.50	12.5	502	23/32	68	6610/120	6005/120
			(490)	(1058)	(281)		(318)	(312)	(18)	(110)	(3000/825)	(2725/825)
11R24.5	6080507	H/16	20.3	43.6	11.2	8.25 7.50	12.5	479	23/32	68	7160/120	6610/120
			(515)	(1108)	(286)		(318)	(298)	(18)	(110)	(3250/825)	(3000/825)

Note: Rim underlined is measuring rim / Exceeding the lawful speed limit is neither recommended nor endorsed.

- Innovative groove design promotes the tread pattern «self-cleaning» and excellent tear and cut resistance.
- Solid shoulders promote even tread wear.
- Functional sipes provide grip and wet braking distance.
- Lateral cavities enhance optimum ventilation in the buttress area and limit heat generation for superior tire life.

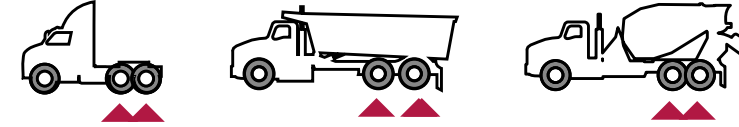
TRUCK TIRE COMPARISON CHART

APPLICATION	WHEEL POSITION	DOUBLE COIN	SAILUN	ROADMASTER TIRES
MIXED SERVICE	Steer - All Position	RR706	S819	RM230 HH

ANTEO

ANTEO MOVER - D

ON-OFF ROAD
DRIVE



M+S



ANTEO

SIZE	PRODUCT NUMBER	LOAD RANGE PLY RATING	LOADED RADIUS in (mm)	OVERALL DIAMETER in (mm)	OVERALL WIDTH in (mm)	APPROVED RIMS in.	MINIMUM DUAL SPACING in. (mm)	REVS PER MILE rpm (rpk)	TREAD DEPTH 32nds (mm)	MAX SPEED mph (kph)	SINGLE lbs Psi (kg kPa)	DUAL lbs Psi (kg kPa)
11R22.5	6080400	H/16	19.5	42.1	11.0	8.25 7.50	12.5	497	30/32	68	6610/120	6005/120
			(495)	(1069)	(280)		(318)	(309)	(23.5)	(110)	(3000/825)	(2725/825)
11R24.5	6080600	H/16	20.5	44.0	11.2	8.25 7.50	12.5	475	30/32	68	7160/120	6610/120
			(520)	(1119)	(284)		(318)	(295)	(23.5)	(110)	(3250/825)	(3000/825)

Note: Rim underlined is measuring rim / Exceeding the lawful speed limit is neither recommended nor endorsed.

- «Helix shape» tread pattern design maximizes traction in both on-road and off-road conditions.
- Multiple height bars balance wear and traction through all tire life.
- Central line blocks design improves traction
- Groove bottom redesigned protection avoids stone damage.

TRUCK TIRE COMPARISON CHART

APPLICATION	WHEEL POSITION	DOUBLE COIN	SAILUN	ROADMASTER TIRES
MIXED SERVICE	Drive	RLB600	S758	RM300 HH

ANTEO

WARRANTY

PROMETEAON TYRE GROUP COMMERCIAL SOLUTIONS, LLC REPLACEMENT LIMITED WARRANTY ANTEO BRAND TRUCK & BUS TIRES

What Is Warranted And Who Is Eligible Under The Limited Warranty

Prometeon Tyre Group Commercial Solutions LLC (PTGCS), 100 Pirelli Drive, PO Box 700, Rome, GA 30161-7000, warrants to the original purchaser that all Anteo Brand replacement tires with a complete Department of Transportation tire identification number and warranted by PTGCS either directly or through an authorized Dealer and which are mounted on trucks and buses within the U.S.A. and Canada will be free from anomalies in workmanship and materials. The PTGCS Replacement Limited Warranty is subject to periodic revision; see the tire warranty section for Anteo branded tires at https://www.prometeon.com/US/en_US for the latest version.

Definitions

Replacement Tires are defined as tires mounted to your vehicle after the Original Equipment tires have been removed.

What Is The Adjustment Policy And For How Long

If an eligible Anteo branded tire becomes unserviceable due to workmanship or material anomalies during its initial warranty period, which is one (1) year from the date of original retail purchase of replacement tires (purchase receipt required - without purchase receipt, then within 12 months from the date of tire manufacture) or within the first 2/32" of the original usable tread, whichever occurs first, the tire will be replaced with the same or comparable tire at no charge to the owner.

After the initial warranty period, if an Anteo branded tire becomes unserviceable due to workmanship or material anomalies, the owner will be entitled to receive a Pro-Rated Adjustment Amount based on remaining tread depth.

If owner is unable to show evidence of the original tire price paid then the original tire price shall be equal to the purchase price of the adjusting dealer at time of adjustment. You are responsible for all mounting, balancing, disposal fees, servicing costs and all applicable taxes, including FET, which will not be included in the pricing for adjustment calculations.

Ride related warranty claims must be submitted within the first 2/32" of wear or within one (1) year from the date of original purchase of replacement tires (purchase receipt required - without purchase receipt, then within 12 months from the date of tire manufacture), whichever comes first, to be considered. If accepted, the tire will be replaced at no charge with a new Anteo tire or a credit will be given for 100% of the current dealer Anteo selling price towards the purchase of any Prometeon brand tire. Owner is responsible for any additional cost for a premium quality Prometeon tire.

A tire has delivered its original usable tread life when it has been worn down to the top of the built-in indicators in the tread grooves (2/32" or 1.6 mm).

The following guidelines for tire removal from service are to be considered regardless of age or mileage:

- 4/32nds for tires used in steering position;
- 2/32nds for tires used in all other positions.

Enhanced Casing Limited Warranty

In addition to the above workmanship and material warranty, PTGCS warrants Anteo branded tires Pro M and Pro D to be covered by a six (6) year or two (2) retreads, whichever occurs first. The Enhanced Casing Limited Warranty covers the eligible Anteo branded tires Pro M and Pro D, providing they meet the eligibility requirements stated on page one and they had been used only in Long Haul and or Regional Highway Service for the entire life of the casing and during any subsequent retreads.

Should any of the covered product's casing be subject to warranty, in PTGCS's or their authorized agent sole discretion, PTGCS will provide casing credit at the then prevailing market value for said tire casing, but not below the following reference values:

- Original Tread \$70.00
- 1st Retread \$50.00
- 2nd Retread \$40.00

You are responsible for all mounting, balancing, disposal fees, servicing costs and all applicable taxes, including FET which will not be included in the pricing for adjustment calculations.

What Is Not Covered by The Limited Warranty

- Tires on any vehicle registered and normally operated outside the United States of America or Canada.
- Tires which are misapplied due to improper fitment, insufficient Speed Rating and/or Load Range / Ply Rating / Load Index, overload, being undersized/oversized, incorrect rim / wheel size / width.
- Ride related anomalies after the first 2/32" of tread wear.
- Claims for irregular wear, rapid wear or wear out. No mileage warranty is expressed or implied.
- Tires damaged from improper mounting/demounting practices, abuse, misuse, or neglect including but not limited to under inflation, curbing, tire chain damage.
- Tires that have been used in under-inflated conditions.
- Tires improperly repaired or with repairs not conforming to the recommended practices of USTMA - US Tire Manufacturers Association, TRMG - Tread Rubber & Tire Repair Materials Manufacturer's Group, TMC - Technology & Maintenance Council, TIA - Tire Industry Association or with section repairs, or with a self-vulcanizing plug only or patch only.
- Tires in which anything other than air or nitrogen has been used as the support medium.
- Tires injected with liquid balancer or sealant or any other balancing material or tire filler unless an inspection of the tire reveals that the presence of such materials was not the cause of the anomaly.
- Other than tires which have been properly retreaded, tires which have been modified by the addition or removal of material or any tire intentionally altered to change its appearance or performance.
- Tires removed in multiples when only one tire can be claimed or is suspect of a claim.
- Tires which become unserviceable because of tire operation in excess of tire - wheel / rim manufacturers' specifications and recommendations, including spinning or dynamometer use.
- Tires which emit excessive noise or become unserviceable because of a mechanical irregularity in the vehicle such as, but not limited to, misalignment, defective brakes, defective shock absorbers or struts, or improper rims / wheels.
- Tires damaged by fire, chemical corrosion/contamination, vandalism, wrecks, theft, run while flat, underinflated, overinflated or abused during servicing.
- Tires affected by flat spotting caused by improper transport or storage.
- Tires which become unserviceable because of road hazard injuries (e.g., nails, glass, metal objects) or other penetrations, stone drilling, snags, bruises or impact damage.
- Tires that have been improperly stored.
- Mechanical condition of the vehicle. These include issues with the vehicle or wheel / rim such as bent wheel / rim assemblies, misalignment, misuse, negligence, racing, chain damage, or improper mounting or demounting.
- Tires which are intended for on-road service, but have been used in on-off or off-road conditions.
- Tires branded BLEM.
- Tires with excessive ozone or weather cracking as a result of operating environment or improper handling or storage.
- Tires improperly retreaded, including, without limitation: improper or inadequate inspection, preparation, equipment, material, repair.
- Tire dealer/retailer services: mounting, demounting, balancing, tire rotation, alignment costs, the cost of applicable federal, state, and local taxes.
- Loss of time, loss of use of vehicle, inconvenience, incidental or consequential damages.

Owner's Responsibilities

The owner is responsible for proper tire care and maintenance. Maintain the correct tire pressure recommended by the vehicle manufacturer by frequently checking the tire pressure with an accurate and calibrated pressure gauge. It is also your obligation to maintain proper alignment and tire/wheel assembly balance. Owner has the responsibility to operate the vehicle within tire/vehicle load capacity and speed limitations as recommended by vehicle manufacturer. Following these recommendations will improve tire life and your satisfaction with the tires.

CAUTION:

Please be aware that it is important to ensure that, before fitting the suggested tires, the fitting is allowed by the technical specifications of the vehicle, the vehicle manufacturer and the relevant homologations. PTGCS does not express any view as to the compatibility of the tire / wheel combination with the technical specifications for the chassis and vehicle.

TO MAINTAIN VEHICLE DYNAMICS AND LOAD CARRYING CAPACITY, REPLACEMENT TIRES MUST ALWAYS HAVE TIRE SIZE, LOAD RANGE / PLY RATING / LOAD INDEX AND SPEED RATING THAT EQUAL OR EXCEED THAT OF THE ORIGINAL EQUIPMENT TIRES OF THE VEHICLE.

How To Make A Claim Under This Limited Warranty

To receive consideration for warranty coverage, tire(s) must be returned to any PTGCS authorized dealer. If the PTGCS authorized dealer believes that the tire(s) may be covered by this Limited Warranty, it will submit the tire(s) to PTGCS. PTGCS will then make a determination regarding qualification for coverage under this Limited Warranty. When making a claim under the terms of this Limited Warranty, you must present the tire along with the proof of purchase to any authorized PTGCS Dealer. Once tires are returned to PTGCS by an authorized PTGCS dealer and warranty credit has been issued, the submitted tires become the property of PTGCS. To locate an authorized PTGCS Dealer in your area, call 1-833-784-8762.

WARRANTY AND REMEDY LIMITATIONS

THIS LIMITED WARRANTY IS THE ONLY EXPRESS WARRANTY GIVEN BY PTGCS, APPLICABLE TO PTGCS BRAND TIRES. PTGCS DOES NOT MAKE ANY OTHER EXPRESS WARRANTY, INCLUDING WITHOUT LIMITATION THE IMPLIED WARRANTIES OF MERCHANTABILITY OR FITNESS FOR A PARTICULAR PURPOSE (WHICH ARE EXPRESSLY DISCLAIMED). PTGCS DOES NOT AUTHORIZE ANY OTHER PERSON, INCLUDING AUTHORIZED PTGCS DEALERS OR VEHICLE MANUFACTURERS, OR VEHICLE DEALERS, TO CHANGE THIS WARRANTY OR CREATE ANY OTHER OBLIGATION IN CONNECTION WITH PTGCS BRAND TIRES.

THE RIGHTS AND REMEDIES AVAILABLE ARE LIMITED TO THOSE RIGHTS AND REMEDIES STATED IN THIS LIMITED WARRANTY. ALL OTHER REMEDIES ARE EXCLUDED. IN NO EVENT SHALL PTGCS BE RESPONSIBLE FOR ANY CONSEQUENTIAL, INCIDENTAL OR SPECIAL DAMAGE(S) IN CONNECTION WITH A PTGCS BRAND TIRE, WHETHER FOR BREACH OF THIS LIMITED WARRANTY, OTHER CONTRACT BREACH, NEGLIGENCE OR OTHER TORT, OR ANY STRICT LIABILITY THEORY.

Conditions And Exclusions:

Unless these limitations are prohibited by state law, this Limited Warranty does not provide compensation for loss of time, loss of use of vehicle, inconvenience, or incidental or consequential damages. Tires/casings presented for claim remain the property of the owner/consumer, and PTGCS and its affiliated companies accept no responsibility for loss of, or damage to, tires/casings, which are in the custody or control of a PTGCS Truck Tire Retailer or distributor for the purpose of inspection for warranty adjustment. Tires accepted for claim become property of PTGCS. In the event of a disputed claim, the owner/consumer must make the tire available for further inspection.

No PTGCS representative, agent, employee or retailer has the authority to make or imply any representation, promise or agreement, which in any way varies the terms of this Limited Warranty. This Limited Warranty applies only in the United States and Canada.

Some states do not allow the exclusion or limitation of incidental or consequential damages, so the above exclusion may not apply to you. This warranty gives you specific legal rights and you may also have other rights which vary from state to state.

If further assistance or information is needed regarding PTGCS Brand tires please contact:

Prometeon Tyre Group Commercial Solutions, LLC
Warranty & Commercial Affairs Group
Monday through Friday
8:00 AM to 6:00 PM Eastern Standard Time

[833] 784-8762 [Option 2]
consumer.affairs@prometeon.com

ANTEO

**TRUCK &
BUS TIRES**

A BRAND OF

PROMETEON

TIRE. MADE FOR BUSINESS